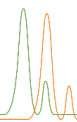




# Marin Analytics

250 BEL MARIN KEYS BLVD #D4 - NOVATO, CA 94949

833.321.TEST



## CERTIFICATE OF ANALYSIS

Hemp Hill Farms

Sample 852-091525-451

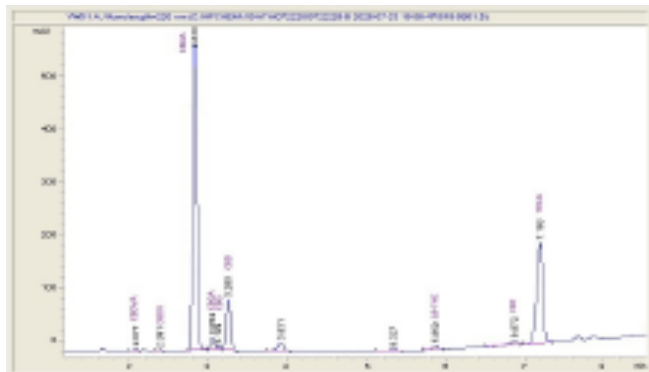
Gorilla Glue

Sample Submitted: 09-15-2025; Report Date: 09-15-2025

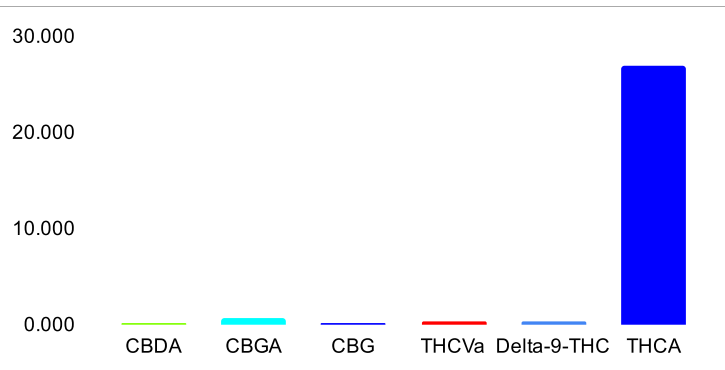
### Gorilla Glue

Plant Material: Hemp Flower

#### Chromatogram



#### Cannabinoid Profile



#### Cannabinoid Profile by HPLC

0.29%

Delta-9-THC

0.00%

CBD

28.42%

Total Cannabinoids

Cannabinoid	% wt	mg/g
CBDA	0.087	0.87
CBGA	0.683	6.83
CBG	0.140	1.40
THCVa	0.318	3.18
Delta-9-THC	0.291	2.91
THCA	26.899	268.99
<b>Total Cannabinoids</b>	<b>28.418</b>	
<b>Calculated Total THC</b>	<b>23.88</b>	<b>238.81</b>
<b>Calculated CBD Yield</b>	<b>0.08</b>	<b>0.76</b>

Calculated Total THC = Delta-9-THC + 0.877 \* THCA

Calculated Maximum CBD Yield = CBD + 0.877 \* CBDA

#### Marin Analytics, LLC

250 Bel Marin Keys Blvd, Suite D4

Novato, CA 94949

833-321-TEST / info@marinanalytics.com

Mike Clemmons

Lab Manager

This sample has been tested by Marin Analytics, LLC using valid testing methodologies and a quality system. Values reported relate only to the sample tested. Marin Analytics, LLC makes no claims as to the efficacy, safety, or other risks associated with any detected or non-detected levels of any compounds reported herein. This Certificate shall not be reproduced except in full without the written approval of Marin Analytics, LLC. Copyright 2023 Marin Analytics, LLC All Rights Reserved.